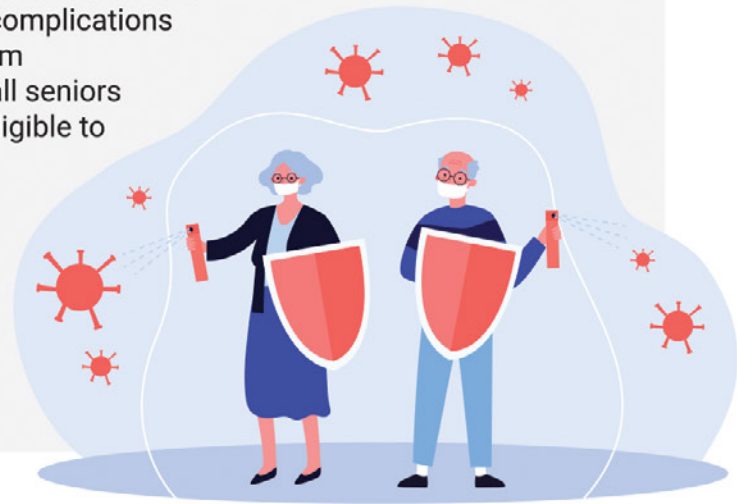


Protecting Seniors Against Influenza and Pneumococcal Disease

By Agency for Integrated Care

All adults are advised to undergo vaccinations recommended under the National Adult Immunisation Schedule (NAIS). However, seniors aged 65 and above face a higher risk of developing complications from influenza and suffering more severe effects from pneumococcal disease. In support of this initiative, all seniors aged 65 and above who are Singapore citizens are eligible to receive subsidies for influenza and pneumococcal vaccines at CHAS GP clinics and at the Vaccination and Childhood Developmental Screening Scheme (VCDSS). Permanent Residents (PRs) who meet the criteria are eligible for subsidies at polyclinics.



Influenza

Brands of Influenza vaccines eligible for subsidies:

Who should receive the vaccine?

You may advise patients above age 65 that they are eligible for influenza vaccination subsidies if they:

- 1) are Singapore citizens,
- 2) fulfil vaccination history criteria of the recommended vaccination as per NCIS/NAIS guidelines, and
- 3) vaccine brand used is listed on Subsidised Vaccine List (SVL).

Influenza Trivalent Vaccine	Influvac	Abbott
Influenza Quadrivalent Cell-based Vaccine	SKYCellflu Quadrivalent	Aj Biologics
Influenza Quadrivalent Egg-based Vaccine	Fluarix Tetra	GSK
Influenza Quadrivalent Egg-based Vaccine	Influvac Tetra	Abbott
Influenza Quadrivalent Egg-based vaccine	VaxigripTetra	Sanofi-Aventis

When should they be vaccinated?

2020-21 Northern Hemisphere (NH) influenza season

The current season for influenza (flu) vaccination is for the 2020-21 NH influenza season (from October 2020 to April 2021). The following persons are recommended to receive the 2020-21 NH seasonal flu vaccine:

- Those who previously received the 2020 Southern Hemisphere (SH) seasonal flu vaccine, even if it was given less than one year ago.
- Those who previously received the 2019-20 NH seasonal flu vaccine.
- Those who have not been vaccinated either the year before, or ever.

2021 Southern Hemisphere (SH) Influenza season

For the 2021 SH influenza season (from May to September 2021), due to changes in H1N1 component of the vaccine, those who have received the 2020-21 NH seasonal flu vaccine or earlier vaccines should still receive the 2021 SH seasonal flu vaccine. It is best to get vaccinated as early in the season as possible, for optimal protection. GPs may wish to advise their patients on the need for the 2021 SH flu vaccination.

Should you have any queries about VCDSS, please contact the AIC GP Engagement Team at 6632 1199 or gp@aic.sg, or visit Primary Care Pages (www.primarycarepages.sg).

Pneumococcal Disease

- Pneumococcal vaccination is recommended for your patients who are aged 65 years and above because they are at increased risk of developing severe pneumococcal disease.
- You may advise your patients who are Singaporeans and above 65 years old that they would be able to receive subsidies for selected pneumococcal vaccinations if they fulfill the vaccination history criteria as per NAIS guidelines. They will be able to use their Medisave to pay for any remaining co payment amount.
- There are two types of pneumococcal vaccines for adults, 13-valent pneumococcal conjugate vaccine (PCV13) and 23-valent pneumococcal polysaccharide vaccine (PPSV23).

Recommended patient groups and dosage recommendations:

Group 1	Group 2	Group 3
<p>Persons age 65 years and above <i>who have not previously received any pneumococcal vaccine</i> are recommended to receive one dose of PCV13, followed by one dose of PPSV23 at least 12 months after PCV13. No further dose is necessary.</p> <p>Persons in this scenario may include individuals who do not have one of the chronic medical conditions, cochlear implant, cerebrospinal fluid leak, anatomic or functional asplenia, or immunosuppression, as listed in the NAIS and did not receive PCV13 and/or PPSV23 when they were age 64 years and below.</p>	<p>Persons age 65 years and above <i>who have previously received PPSV23 before age 65 years</i> should receive one dose of PCV13 if they have not received it, at an interval of at least 12 months after the most recent dose of PPSV23.</p> <p>Persons age 65 years and above with prior history of PPSV23 before age 65 years should receive one final dose of PPSV23 at least 12 months after PCV13 and at least 5 years after the most recent dose of PPSV23. Only one dose of PPSV23 is recommended on or after age 65 years.</p> <p>Persons in this scenario may include individuals with one of the chronic medical conditions listed in the NAIS and had received PPSV23 when they were age 64 years and below.</p>	<p>Persons age 65 years and above with cochlear implant, cerebrospinal fluid leak, anatomic or functional asplenia, or immunosuppression who have not previously received any pneumococcal vaccine should receive one dose of PCV13 followed by one dose of PPSV23 at least 8 weeks after PCV13. No further dose is necessary.</p> <p>Persons with one of these conditions who have previously received PPSV23 before age 65 years should receive one final dose of PPSV23 at least 5 years after the most recent dose of PPSV23. Only one dose of PPSV23 is recommended on or after age 65 years.</p>
<ul style="list-style-type: none"> If indicated in the NAIS, adults are recommended to receive only one dose of PCV13 in a lifetime. If both PCV13 and PPSV23 are indicated, PCV13 should be given first, followed by PPSV23 at an appropriate interval. PCV13 and PPSV23 should not be given at the same time and the minimum acceptable interval between PCV13 and PPSV23 is 8 weeks. 		

Brands of pneumococcal vaccines eligible for subsidies:

Pneumococcal Conjugate Vaccine [13-valent] (PCV13)	Prevenar 13	Pfizer
Pneumococcal Polysaccharide Vaccine [23-valent] (PPSV23)	Pneumovax 23	MSD

Cost of Vaccinations

The maximum amounts that eligible Singaporeans will need to **co-pay** for the influenza and pneumococcal vaccinations at CHAS GP clinics are:

Vaccine*#	Eligible Pioneer Generation (PG)	Eligible Merdeka Generation (MG)/ CHAS Blue/ CHAS Orange	Eligible CHAS Green/ Non-CHAS
Influenza (trivalent or quadrivalent) (INF)	Up to \$9	Up to \$18	Up to \$35
13-valent pneumococcal conjugate (PCV13)	Up to \$16	Up to \$31	Up to \$63
23-valent pneumococcal polysaccharide (PPSV23)	Up to \$10	Up to \$20	Up to \$40
At polyclinics, eligible adult Singaporeans can receive up to 75% subsidy on their vaccinations. Eligible PGs and MGs will receive an additional 50% and 25% subsidy off their subsidised bills respectively.			

*Refer to the NAIS for the recommended age and medical condition/indication.

Applicable to certain brands. Please refer to the latest Subsidised Vaccine List on www.primarycarepages.sg.