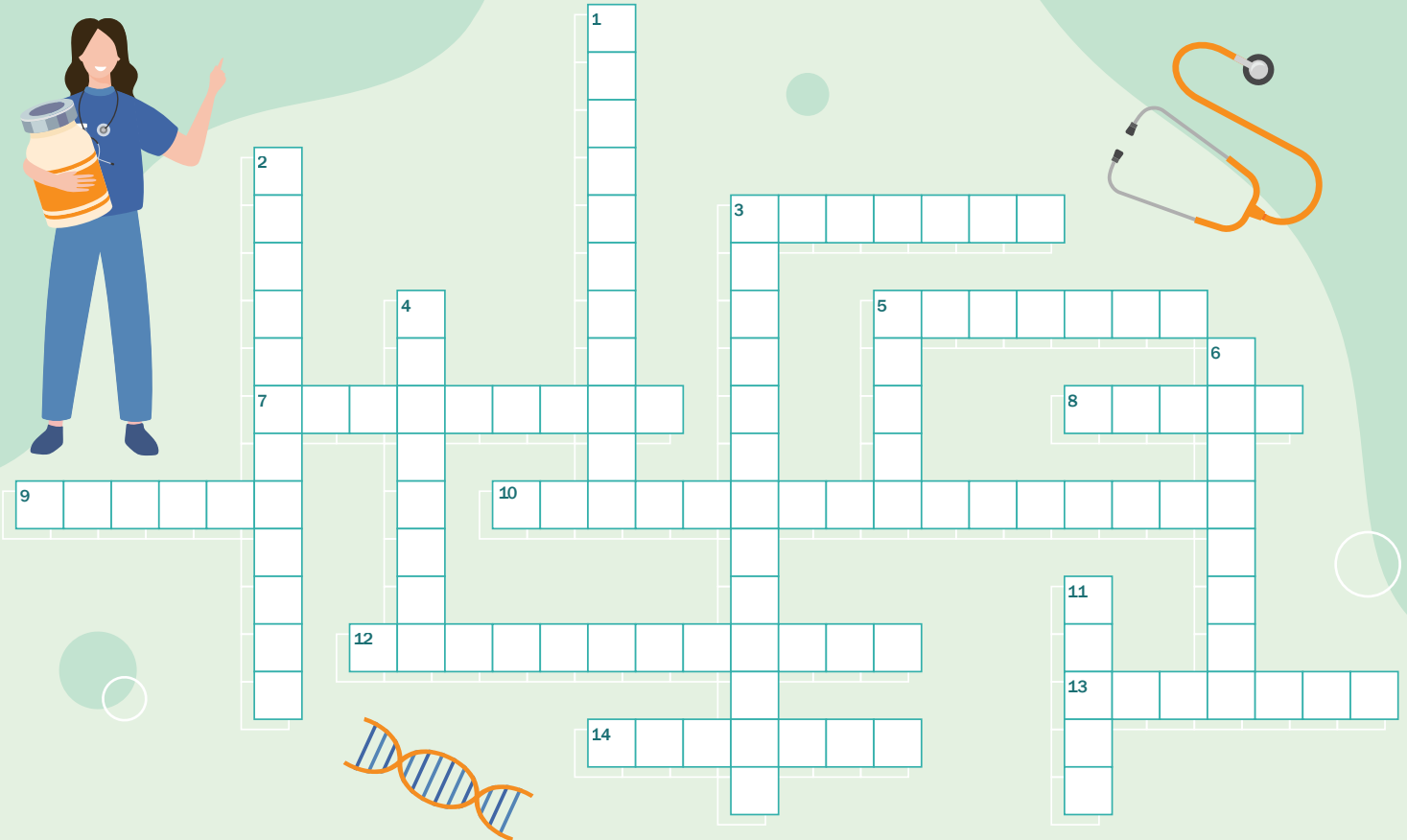


M E D I - C R O S S W O R D S

Try not to use Google for this! SMA News and Dr Jipson Quah bring to you yet another instalment of our crossword puzzle! We hope you have a little fun solving this and do feel free to share this puzzle with your friends and colleagues. The answer key will be released with the next instalment.



ACROSS

- Japanese surgeon of the Edo period who was the first recorded doctor to have used anaesthetic for surgery for a breast cancer patient and treated a further 156 patients with breast cancer (first name: Seishu)
- A severe, often fatal illness in humans that causes severe viral haemorrhagic fever, transmitted to humans from fruit bats and spreads through human-to-human transmission
- Set of symptoms that occurs as a consequence of drinking too much, commonly known as a "hangover"
- First found in Malaysia, this virus is transmitted to humans from animals or contaminated foods, and can also be transmitted from human to human, potentially leading to severe deaths and illnesses
- A British surgeon, he was a pioneer of antiseptic surgery and preventative medicine (first name: Joseph)
- Low-temperature foods causing transient but painful headaches, commonly known as a "brain freeze"
- The excessive flow of tears, often serving to clean and lubricate the eyes in response to an irritation
- French physician who invented the stethoscope in 1816 (first name: Rene)
- The first physician to emerge in Ancient Egypt, due to his extensive knowledge in medicine and how his medical teachings were among the first not completely driven by magic or mysticism

DOWN

- Numbness of an extremity due to pressure on the sensory nerve
- A virus that is transmitted by direct contact with the bodily secretions of rodents which can potentially lead to severe symptoms such as haemorrhaging and kidney failure
- The erection of hairs on the skin due to cold, fear or excitement, commonly known as "goosebumps"
- An ancient Indian surgeon known as the "father of plastic surgery" who had completed a myriad of ground-breaking operations. He also developed unique and practical techniques to dissect the human body and study its structure
- French oncologist and immunologist who carried out the first hematopoietic stem cell transplantation of bone marrow grafts to save patients suffering from leukaemia in 1958 (first name: Georges)
- American physician known for inventing the first magnetic resonance imaging machine in 1977 (first name: Raymond)
- The youngest of the four founding staff of Johns Hopkins Hospital, which included William Halstead, William Osler and William Welch. He is universally regarded as having established gynaecology as a surgical specialty (first name: Howard)